



Queensland Hospital and Health Services Performance in 2025

Food purchasing decisions are influenced by many factors including, the options available, how they are presented and promoted and their cost. Health and Wellbeing Queensland's (HWQld) A Better Choice strategy is designed to change the food environment to make it easier for Queenslanders to access healthy food and drink options outside the home.

Performance targets are set for the availability of food and drinks from each of these categories in food retail outlets and vending machines. These targets can be viewed on subsequent pages.

A Health Service Directive: Healthier food and drinks in healthcare facilities (the Directive) directs HHSs to ensure that healthy food and drinks are sold, provided, promoted and advertised at healthcare facilities, through implementation of A Better Choice. The Directive establishes HHSs as places where staff and visitors are supported to make choices that promote health and wellbeing.

The A Better Choice - Food and Drink Supply Strategy for Queensland Healthcare Facilities (A Better Choice) guides Hospitals and Health Services (HHSs) to create healthy food environments that promote healthier food and drinks to staff and visitors. It is based on the Australian Guide to Healthy Eating, and uses a traffic light system to classify products in three categories according to their nutritional value:

HWQld supports HHSs to implement A Better Choice, monitors performance against the targets and reports on this performance as a requirement of the Directive. This includes providing visibility of HHS level compliance to the Queensland public for the purpose of promoting transparency, tracking progress, and supporting adoption of A Better Choice.

Retail outlets and vending machines in healthcare facilities meet the requirements of the Directive when they achieve the performance targets for food and drinks in all three categories (Green, Amber and Red).

This report provides data on the 2025 performance of 17 Queensland Hospital and Health Services (Including Mater Health) against the Directive. Data was reported by HHSs between November 2025 and January 2026.



Green **best** nutritional value



Amber **some** nutritional value



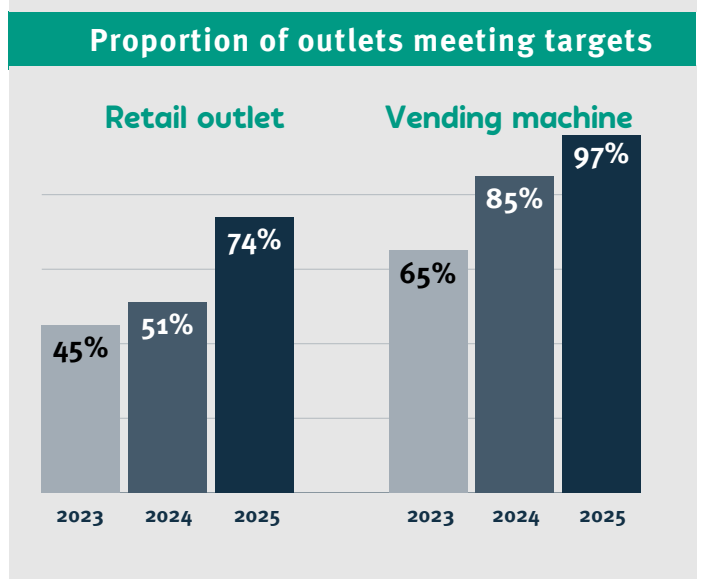
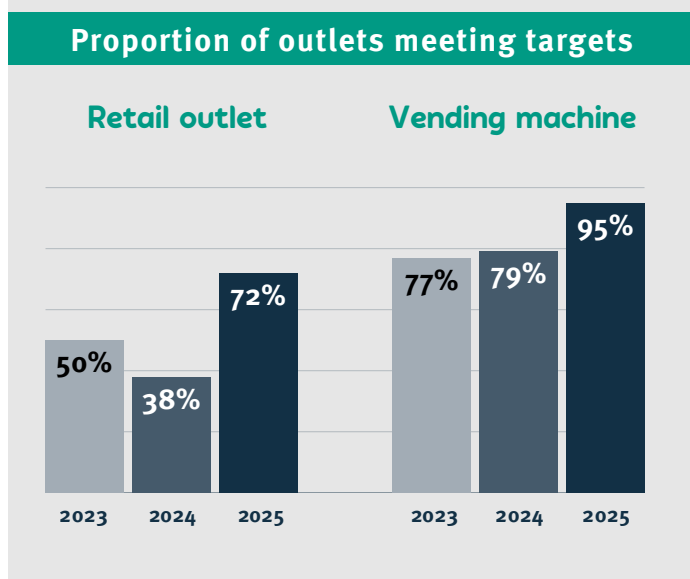
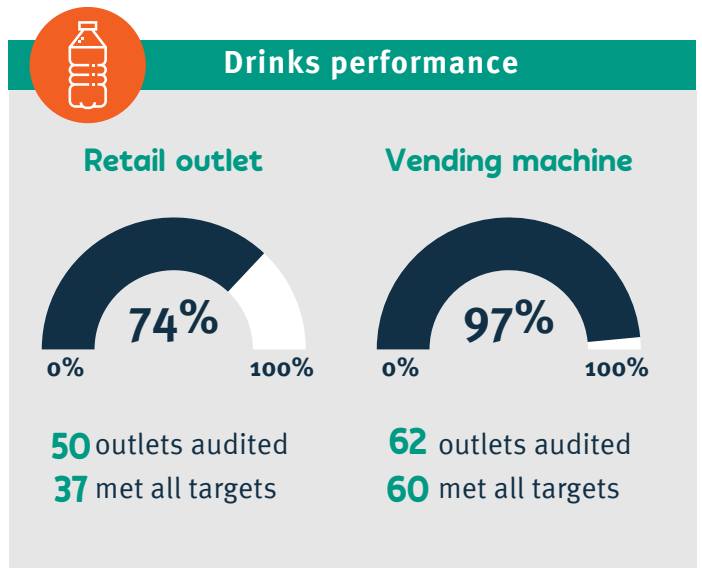
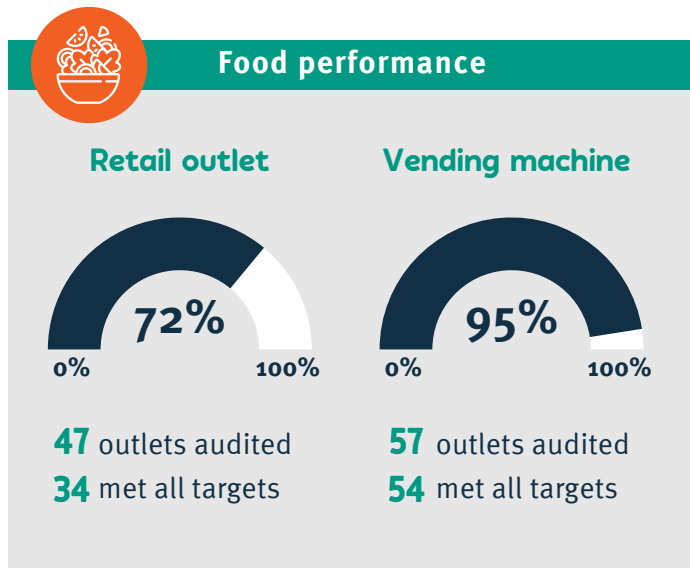
Red **limited or no** nutritional value



Results

Retail outlets and vending machines

The proportion of retail outlets and vending machines meeting all targets from the three categories (Green, Amber, Red) that were audited in 2025 is shown below. Performance ranged from 72% to 97% depending on the nature of the outlet and across food and drinks. The three-year trend is also shown, indicating an increase in both food and drinks across vending machine and retail outlet performance. These results inform where future implementation efforts are needed.



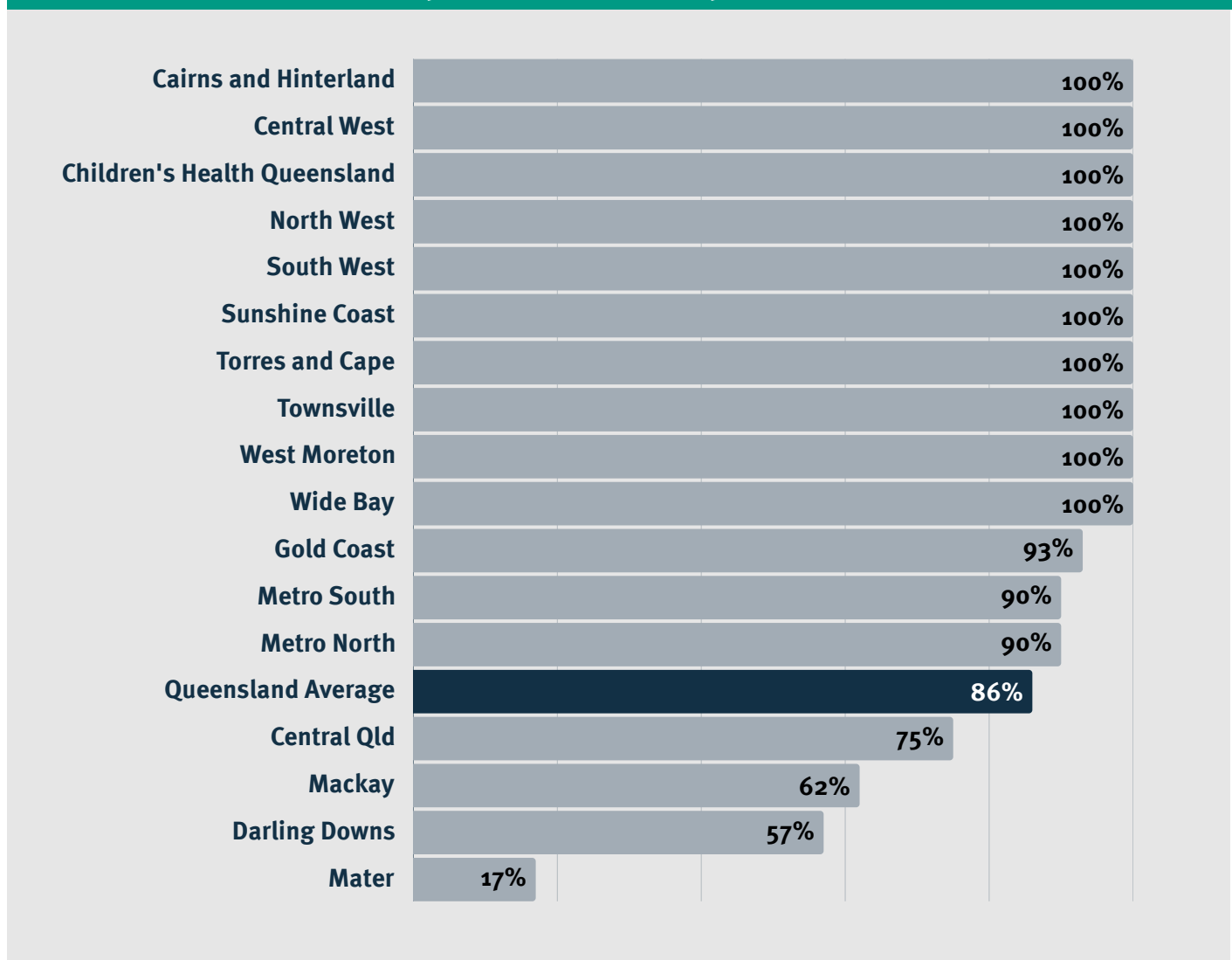


Results

HHS level performance

On average across Queensland HHSs, 86% of outlets (retail and vending machines) met all food and drink targets, an increase of **18%** from 2024. Ten HHSs met all food and drink targets, achieving full performance and 11 HHSs made improvements against the targets for either food or drinks.

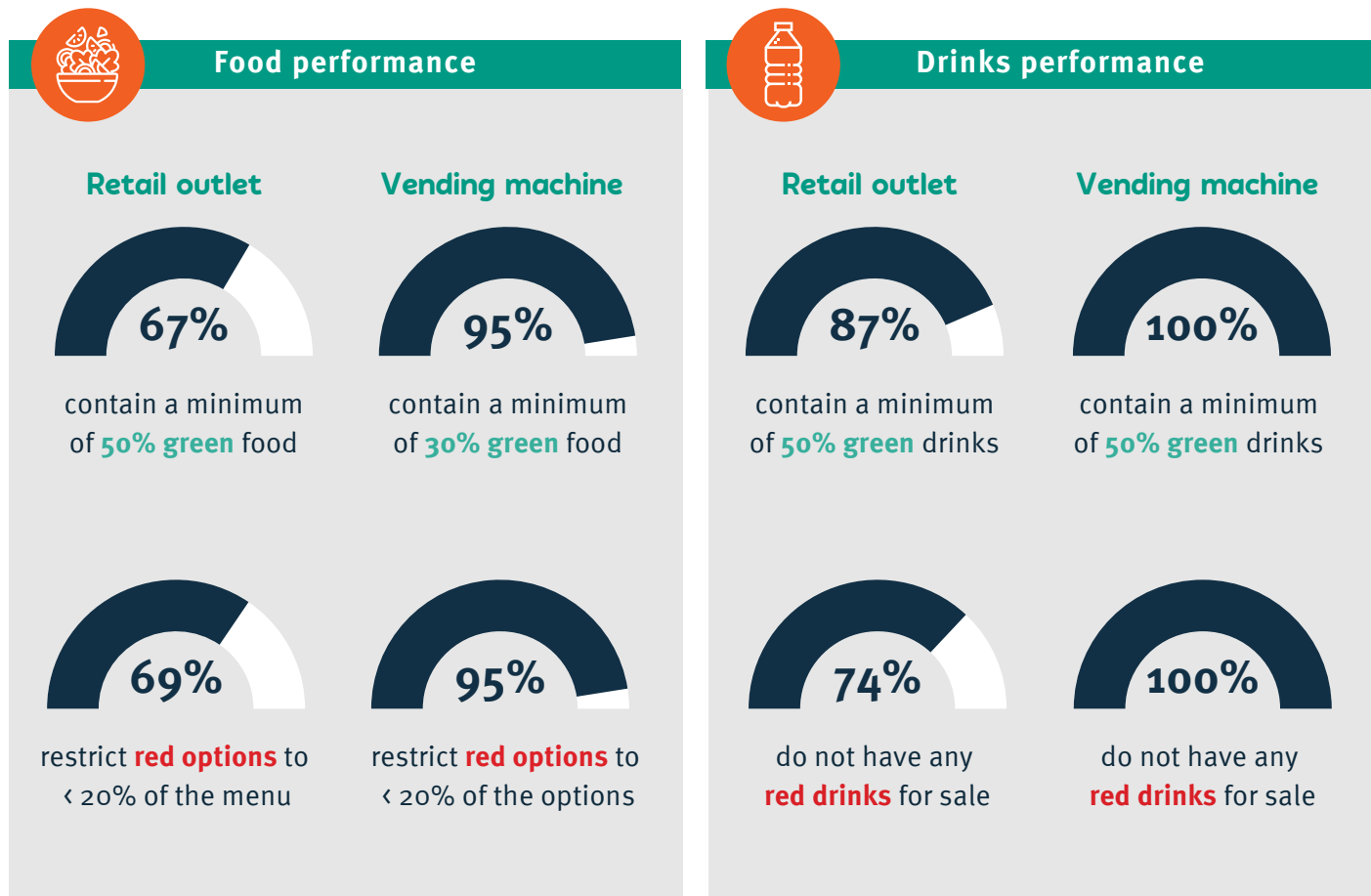
Performance comparison (%) of all Hospital and Health Services





Results Selected targets

The average HHS performance is a useful measure of the proportion of retail outlets and vending machines that meet all the relevant targets in A Better Choice (see the Performance targets section below). However, looking at performance against key food and drink targets in retail outlets and vending machines is another way to report on progress towards meeting the requirements of the Directive, as shown below. Note: Overall drinks performance also considers meeting the Amber- artificially sweetened category.



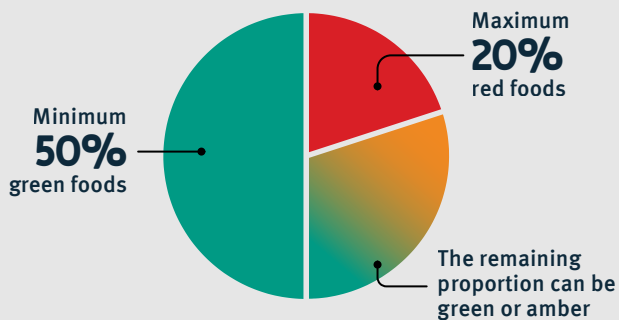


Performance targets

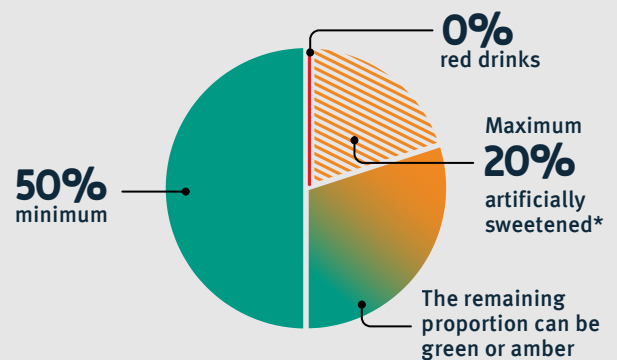
A Better Choice performance targets are shown in the figures below. More information about how food and drinks are categorised to assess performance is available in the [A Better Choice - Food and Drink Supply Strategy for Queensland Healthcare Facilities](#).

Retail outlets

Food



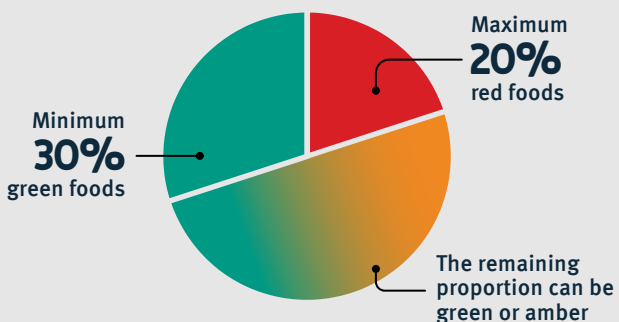
Drinks



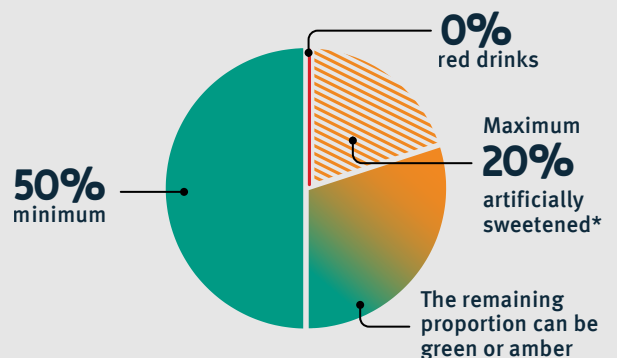
* Excluding artificially or naturally sweetened milk drinks

Vending machines

Food



Drinks



* Excluding artificially or naturally sweetened milk drinks

For enquires related to this report, email abetterchoice@hw.qld.gov.au. More information about Health and Wellbeing Queensland's suite of A Better Choice initiatives can be viewed at hw.qld.gov.au/a-better-choice.