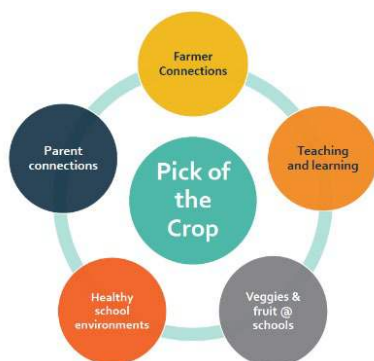


Farmer and Food Connections - Overview



Pick of the Crop is a whole school healthy eating program, aimed at increasing the opportunities for primary school students in Queensland to learn about and eat more vegetables and fruit.

Schools who participate in the program develop locally designed actions across five components, which include connecting schools with farmers, producers, and agriculture businesses.



Background information

Connecting agriculture through local growers, horticulture producers and farmers to schools has never been more important.

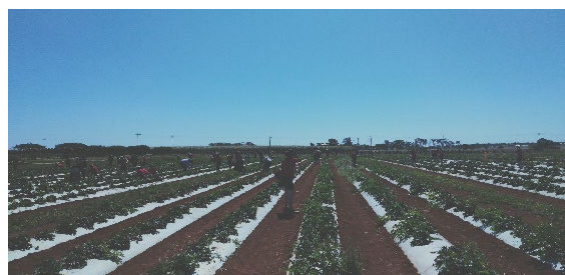
With the emergence of the COVID-19 pandemic, how Queenslanders live, eat, travel, and connect with each other has significantly changed, including affecting supply chains, such as for vegetables and fruit.

The Queensland Government currently runs campaigns or provides [information](#) that support local communities, like schools, to connect with the local Queensland food and agriculture environment:

- [Eat Queensland](#)
- [Go Local Grow Local](#)
- [The Agribusiness Gateway to Industry Schools program \(AGISP\)](#)

Pick of the Crop connects with Queensland farmers

Pick of the Crop supports schools wanting to provide opportunities for their students to experience and see all stages of 'Paddock to plate' or 'Farm to fork'. These include: starting with planting and healthy soils through to processing, packing and transportation, before produce ends up on the plate.



Why should schools connect with farmers?

Benefits for connecting with farms or agriculture businesses include:

- Assist teaching students where food is grown
- Develops students food literacy, which supports healthy eating behaviours
- Align teaching and learning within the Australian Curriculum, using interactive and hands-on opportunities
- Build connections with school gardens
- Establish new or build on existing partnerships with farmers or businesses
- Support potential social benefits for farmers through links with the local school community
- Encourage students to consider potential careers.

For more information, visit: www.hw.qld.gov.au/pick-of-the-crop

December 2021